

Technical Specification

Hydraulic crane

PK 580 TEC

(S435SKAS11)

Edition 12/2022

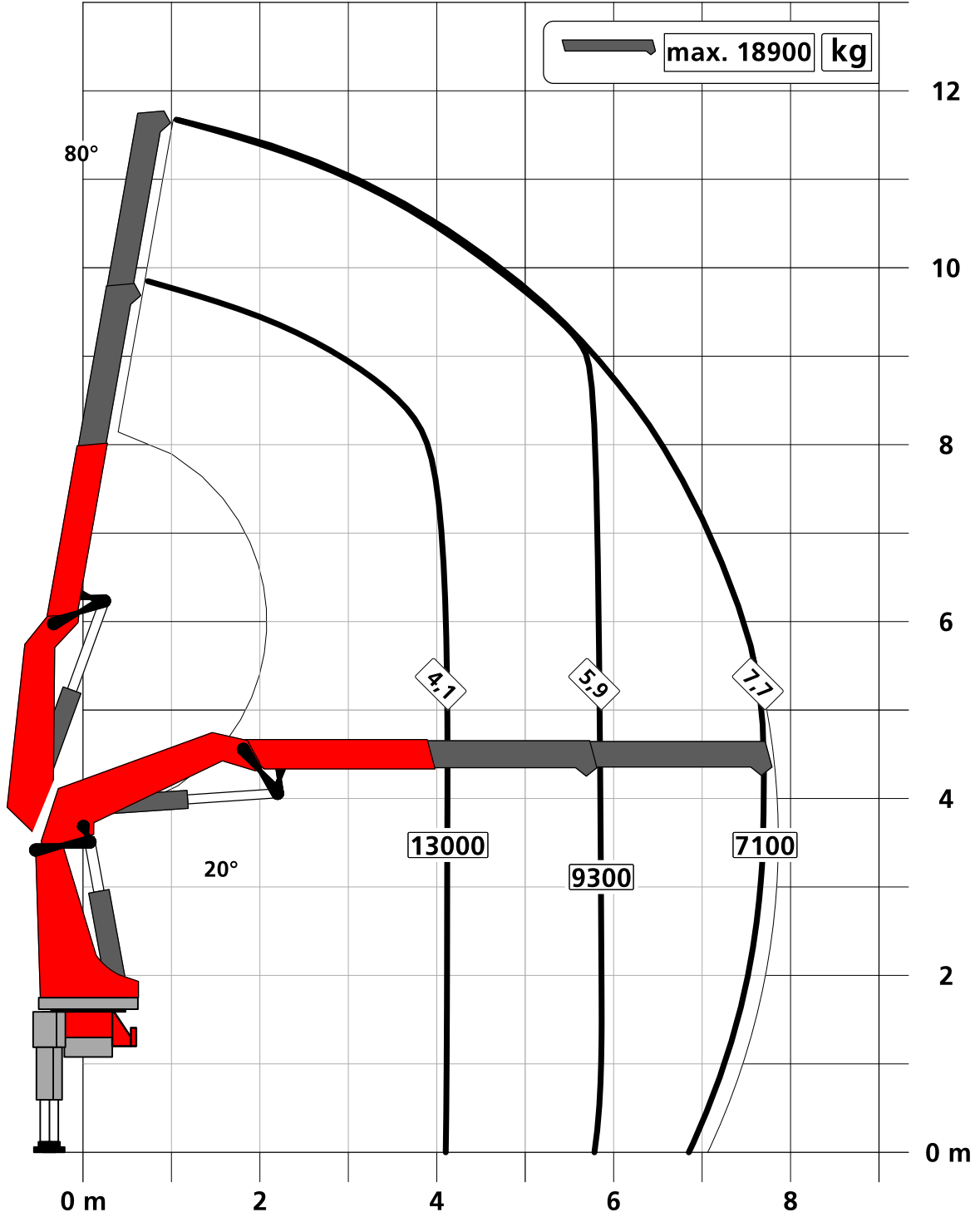
EN

PALFINGER AG
Lamprechtshausener Bundesstraße 8
5101 Bergheim / Austria
www.palfinger.com

Page	
020	LIFTING CAPACITY DIAGRAM
020.01200	Lifting capacity diagram PK 580 TEC A
020.02200	Lifting capacity diagram PK 580 TEC B
020.03200	Lifting capacity diagram PK 580 TEC C
020.04200	Lifting capacity diagram PK 580 TEC D
020.05200	Lifting capacity diagram PK 580 TEC E
020.06200	Lifting capacity diagram PK 580 TEC F
020.07200	Lifting capacity diagram PK 580 TEC G
020.10200	Lifting capacity diagram PK 580 TEC E PJ150 C DPS-C
020.10210	Lifting capacity diagram PK 580 TEC E PJ150 EJV1 DPS-C
020.11200	Lifting capacity diagram PK 580 TEC F PJ150 C DPS-C
020.11210	Lifting capacity diagram PK 580 TEC F PJ150 EJV1 DPS-C
020.11210 FPM	Working area FPM PK 580 TEC F PJ150 E
020.12200	Lifting capacity diagram PK 580 TEC F PJ090 B DPS-C
020.12210	Lifting capacity diagram PK 580 TEC F PJ090 CJV1 DPS-C
020.13200	Lifting capacity diagram PK 580 TEC G PJ090 B DPS-C
020.13210	Lifting capacity diagram PK 580 TEC G PJ090 CJV1 DPS-C
020.13210 FPM	Working area FPM PK 580 TEC G PJ090 C
020.21000	Load capacity-Rope winch 2.5t
020.21100	Load capacity-Rope winch 3.5t

Subject to change, production tolerances have to be taken into account.

Symbolic crane figure



For Rope winch load capacity refer to page

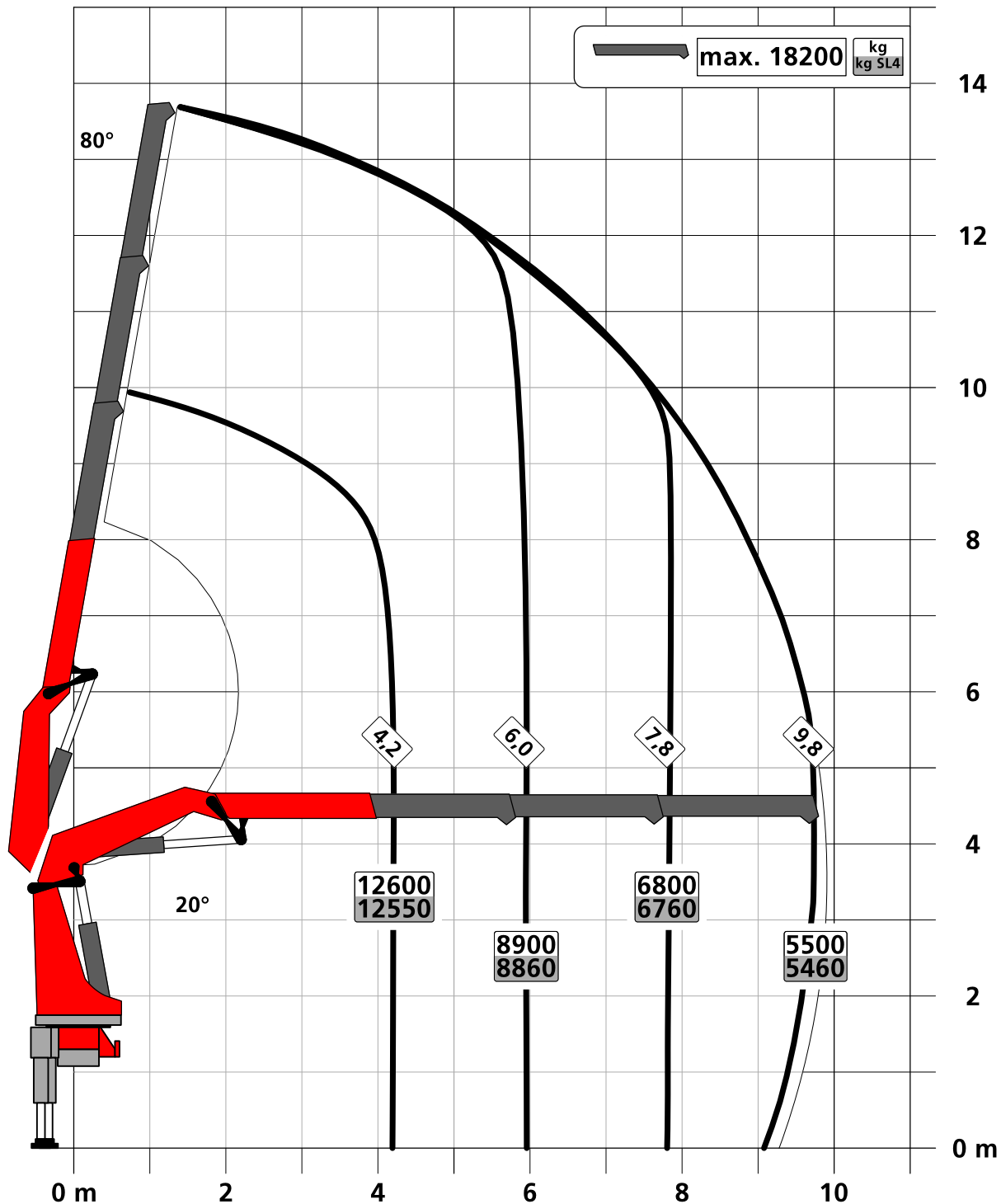
Page 020.21000 2.5t

Page 020.21100 3.5t

Lifting capacity diagram PK 580 TEC B

Subject to change, production tolerances have to be taken into account.

Symbolic crane figure



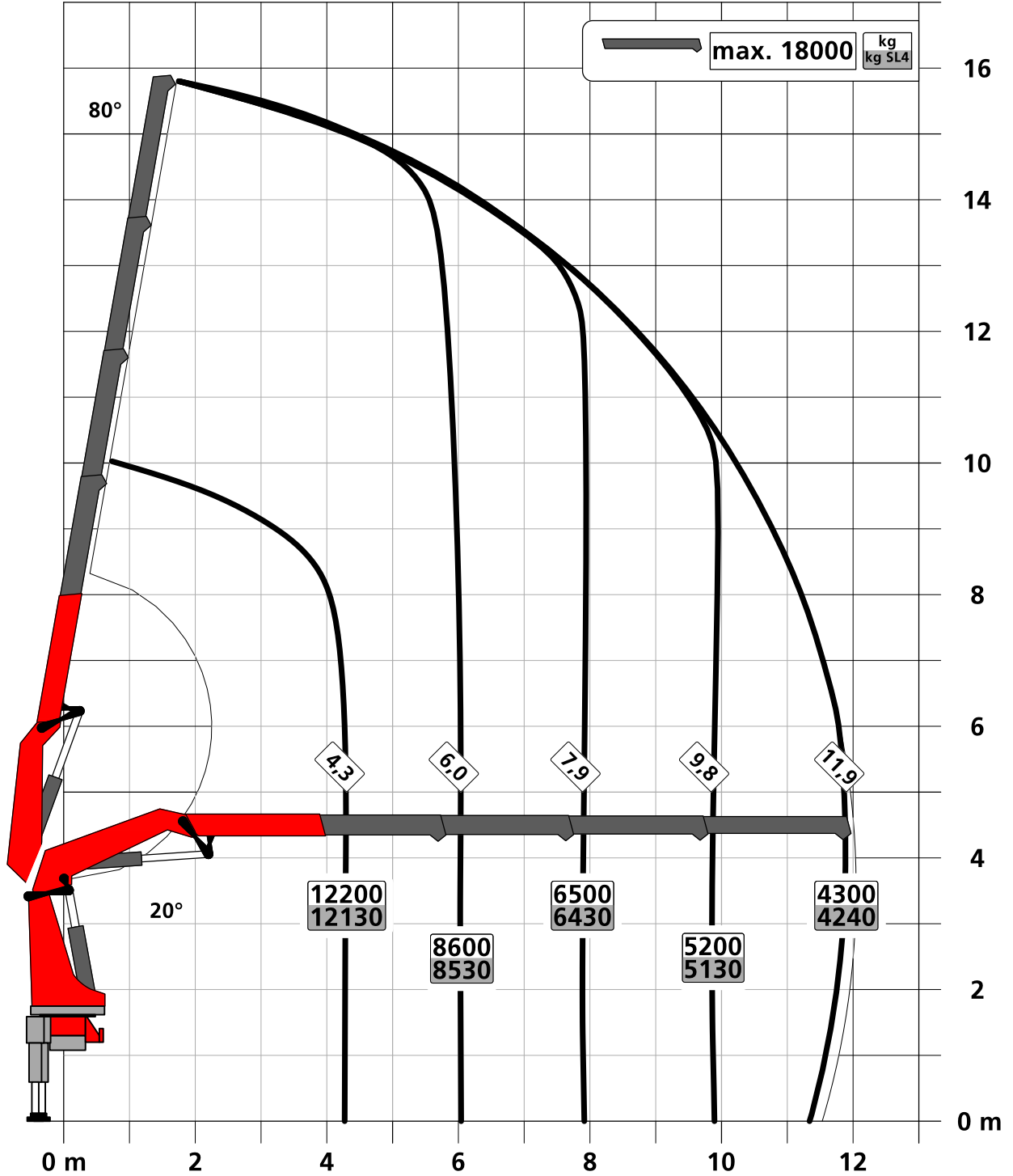
For Rope winch load capacity refer to page

Page 020.21000 2.5t

Page 020.21100 3.5t

Subject to change, production tolerances have to be taken into account.

Symbolic crane figure



For Rope winch load capacity refer to page

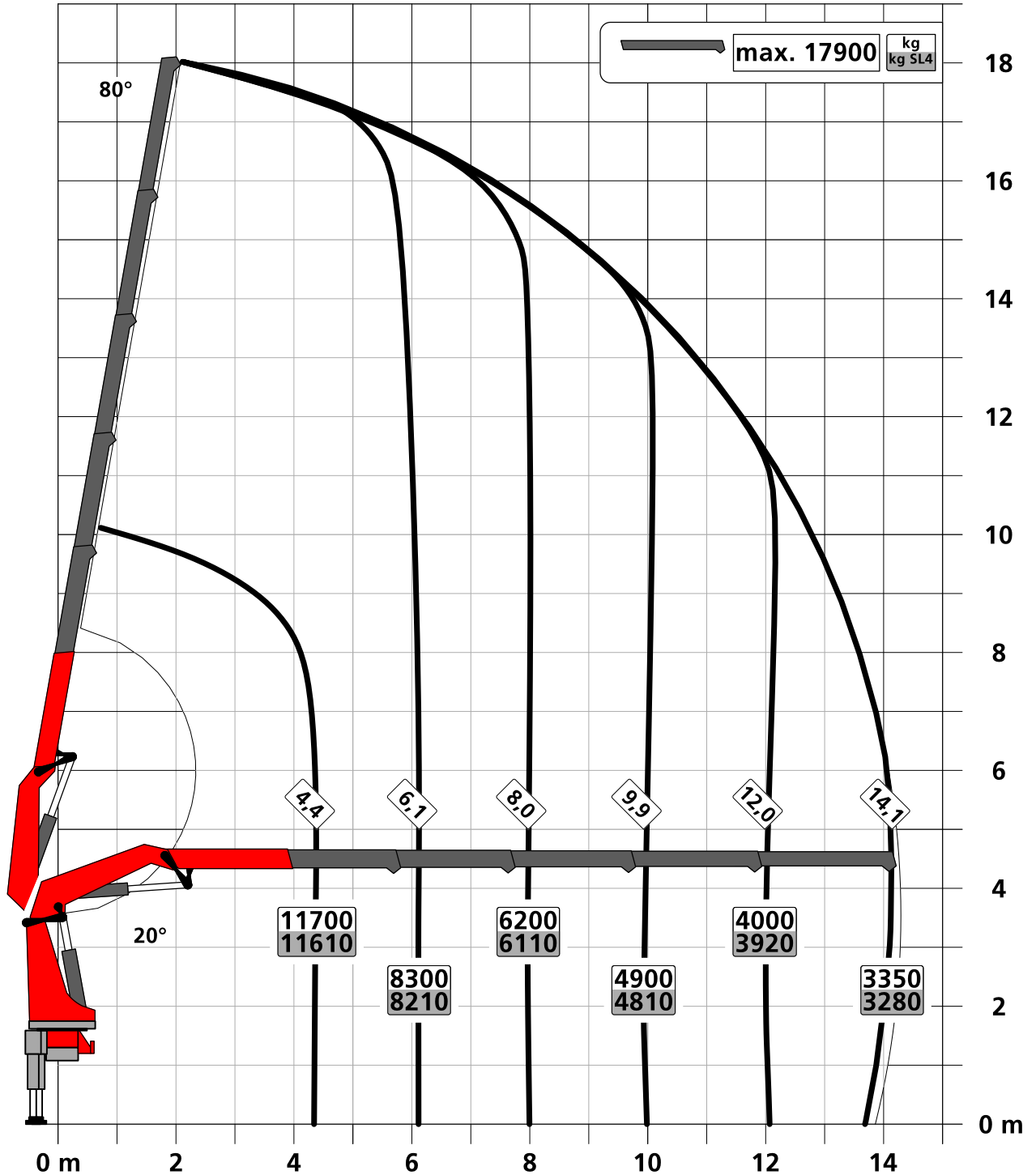
Page 020.21000 2.5t

Page 020.21100 3.5t

Lifting capacity diagram PK 580 TEC D

Subject to change, production tolerances have to be taken into account.

Symbolic crane figure



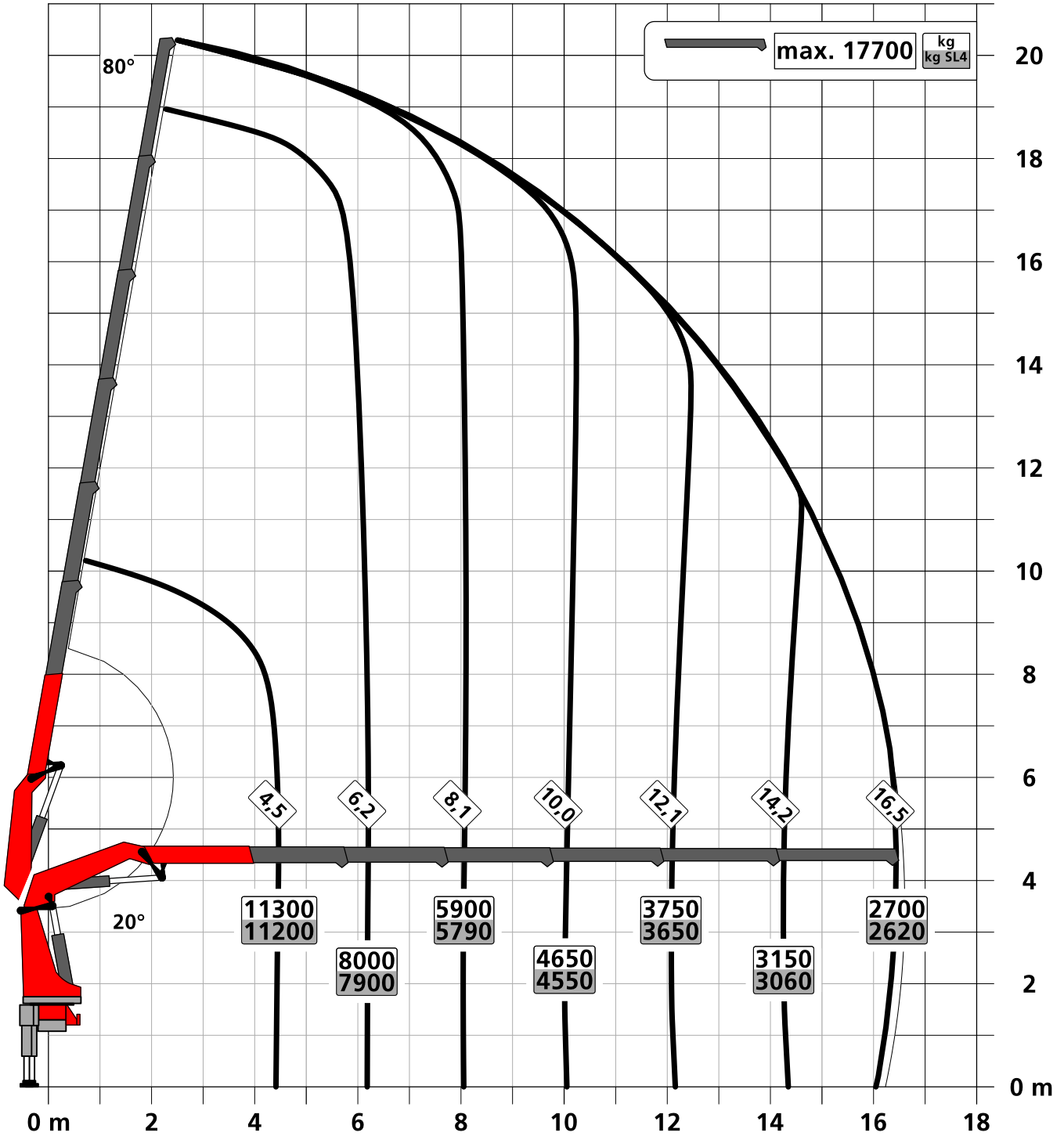
For Rope winch load capacity refer to page

Page 020.21000 2.5t

Page 020.21100 3.5t

Subject to change, production tolerances have to be taken into account.

Symbolic crane figure



For Rope winch load capacity refer to page

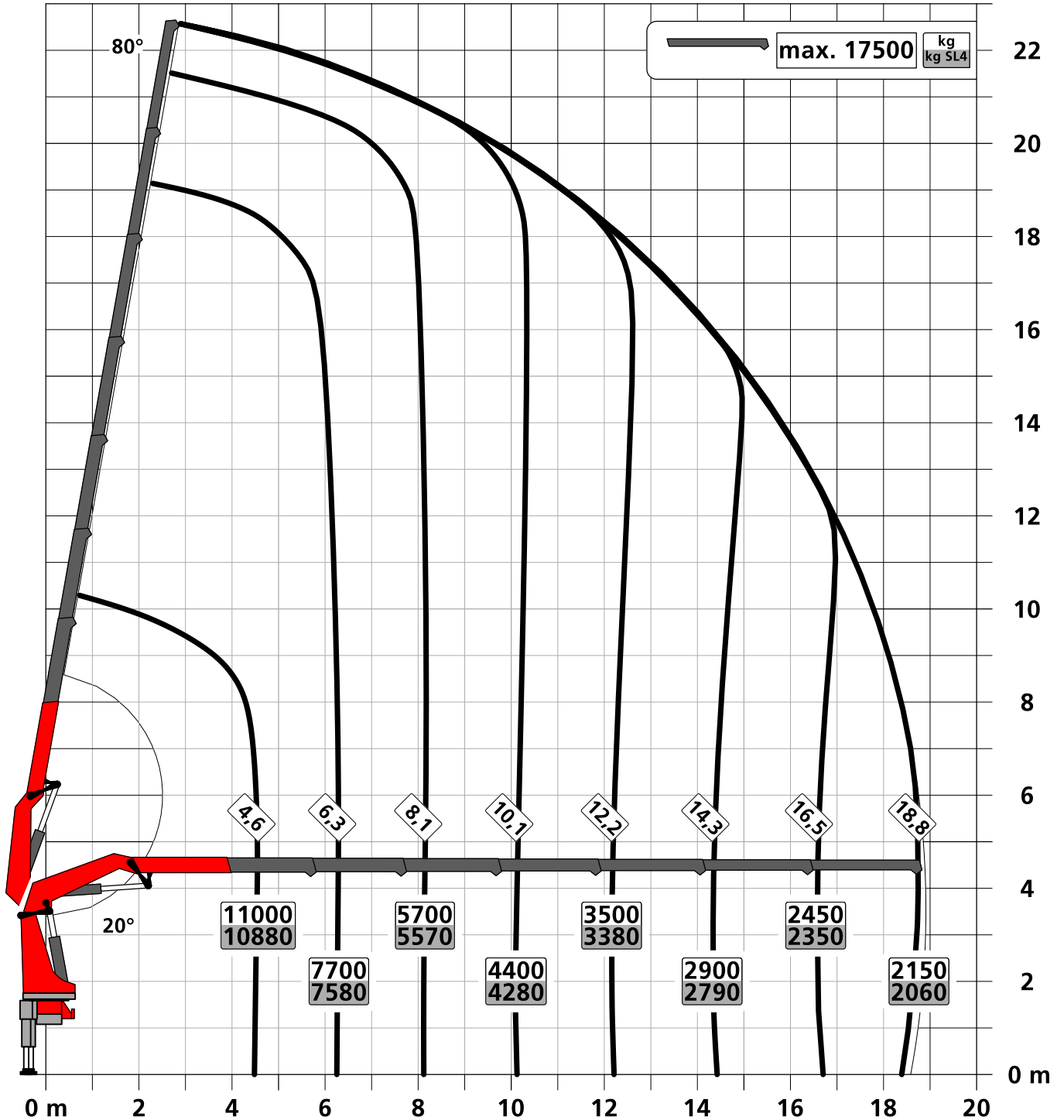
Page 020.21000 2.5t

Page 020.21100 3.5t

Lifting capacity diagram PK 580 TEC F

Subject to change, production tolerances have to be taken into account.

Symbolic crane figure



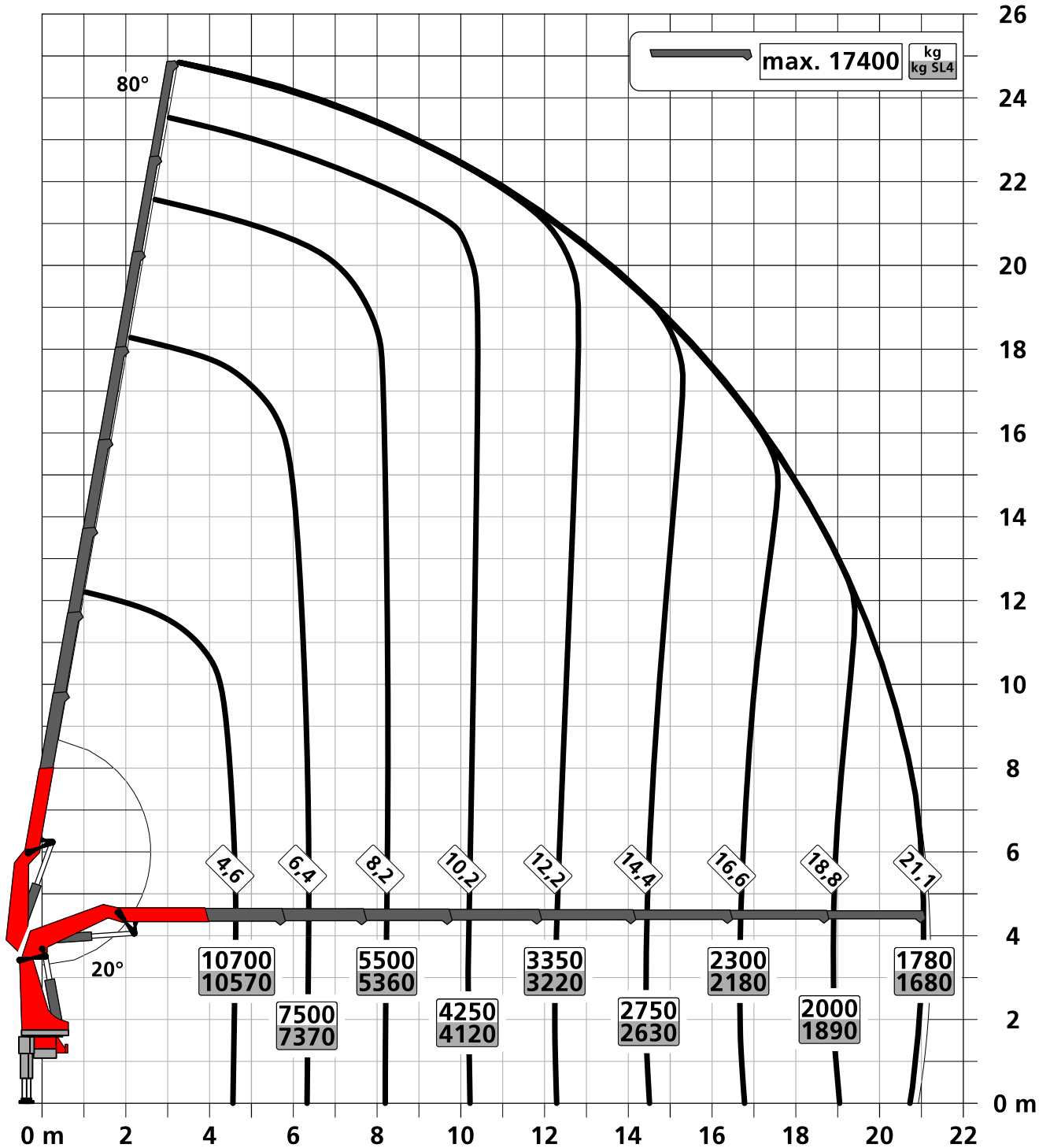
For Rope winch load capacity refer to page

Page 020.21000 2.5t

Page 020.21100 3.5t

Subject to change, production tolerances have to be taken into account.

Symbolic crane figure



For Rope winch load capacity refer to page

Page 020.21000 2.5t

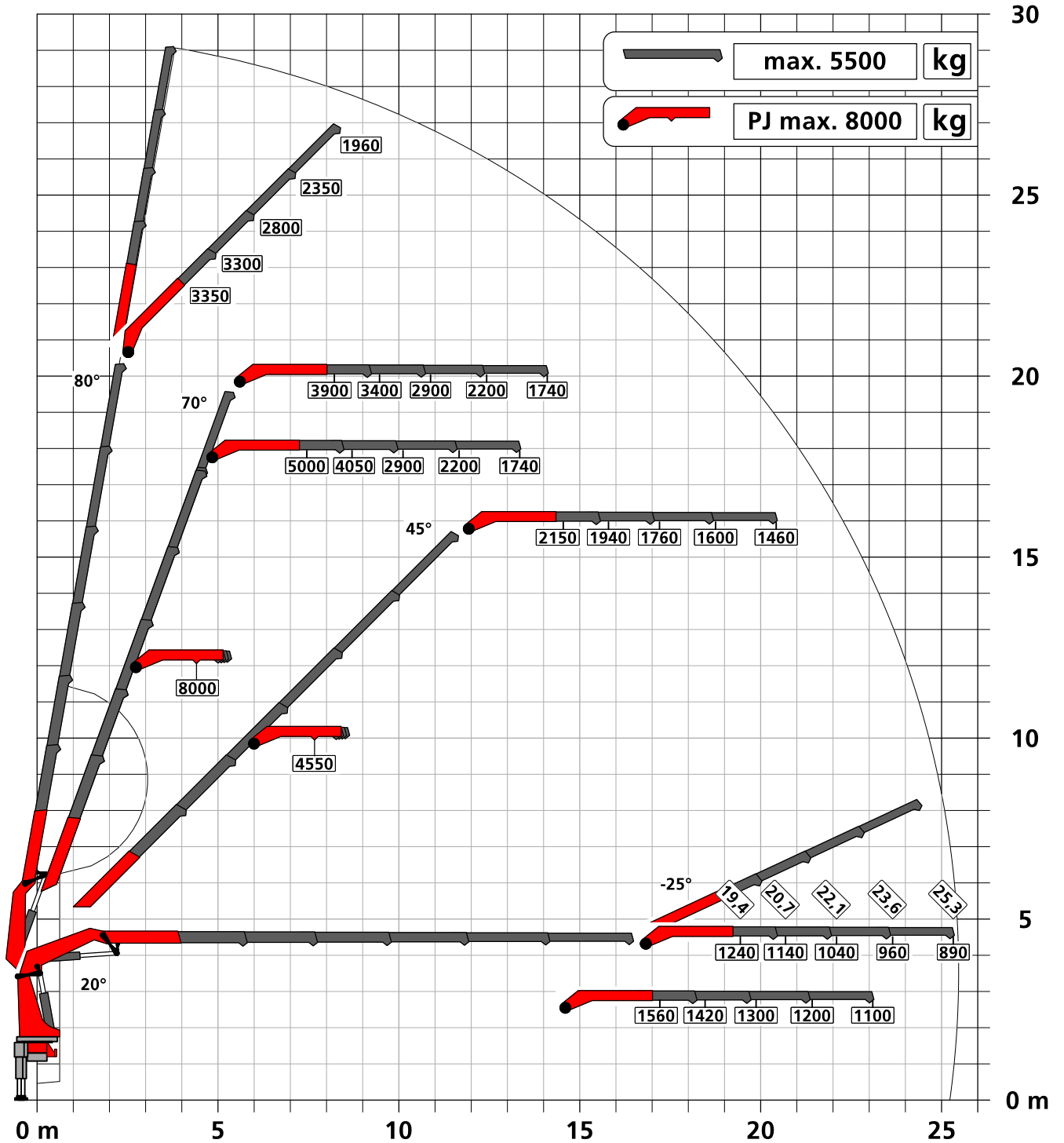
Page 020.21100 3.5t

Lifting capacity diagram PK 580 TEC E PJ150 C DPS-C

Subject to change, production tolerances have to be taken into account.

Symbolic crane figure

DPS-C
Dual Power System



The load capacities as per chart are not reached when using hose equipment on the Fly-Jib.



For Rope winch load capacity refer to page

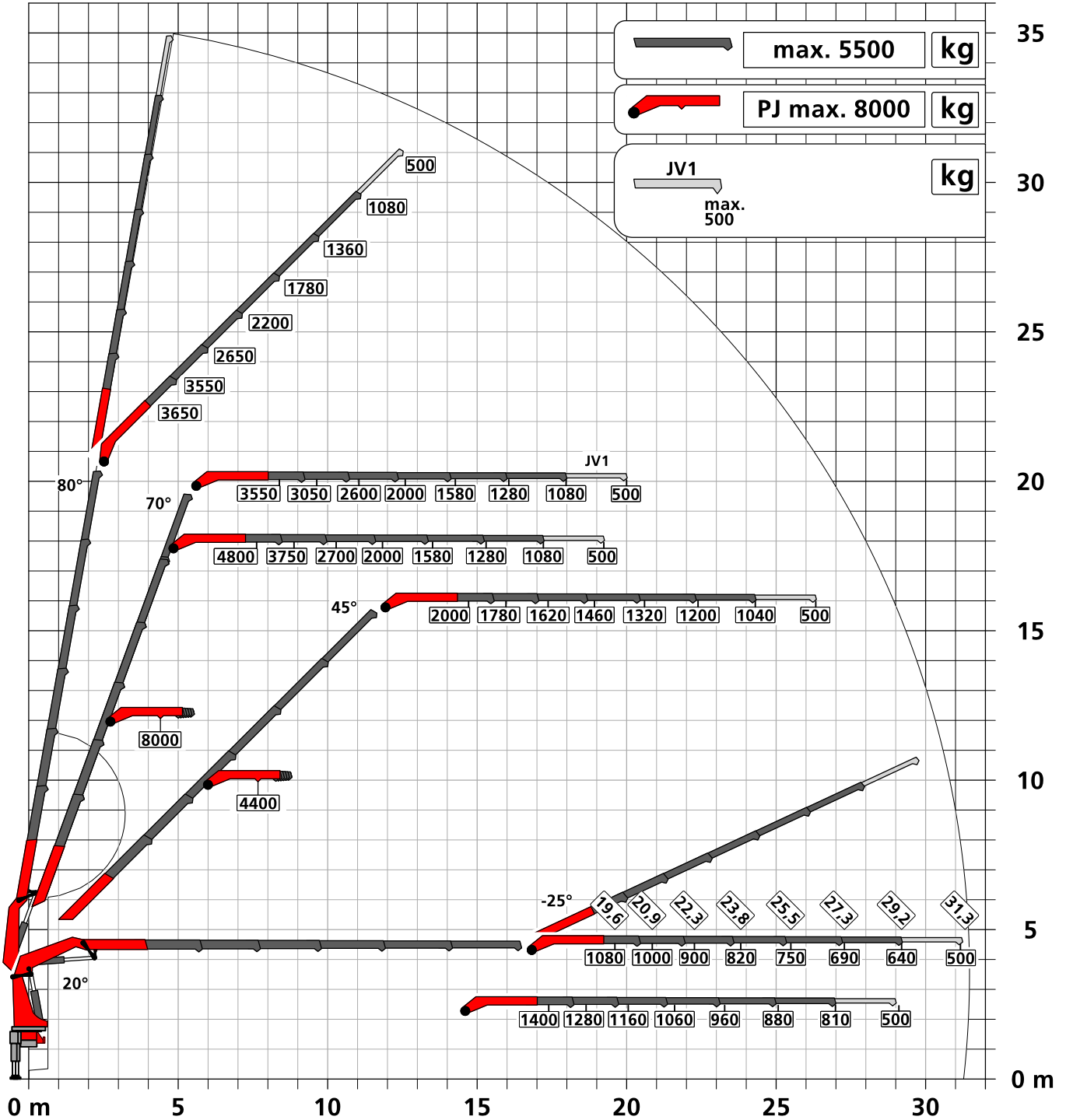
Page 020.21000 2.5t

Page 020.21100 3.5t

Subject to change, production tolerances have to be taken into account.

Symbolic crane figure

DPS-C
Dual Power System



:Dead weight JV1
 40 kg

When using mechanical boom extensions, the loads shown on the charts need to be reduced by the weight of these extensions. The load capacities as per chart are not reached when using hose equipment on the Fly-Jib.



For Rope winch load capacity refer to page

Page 020.21000 2.5t

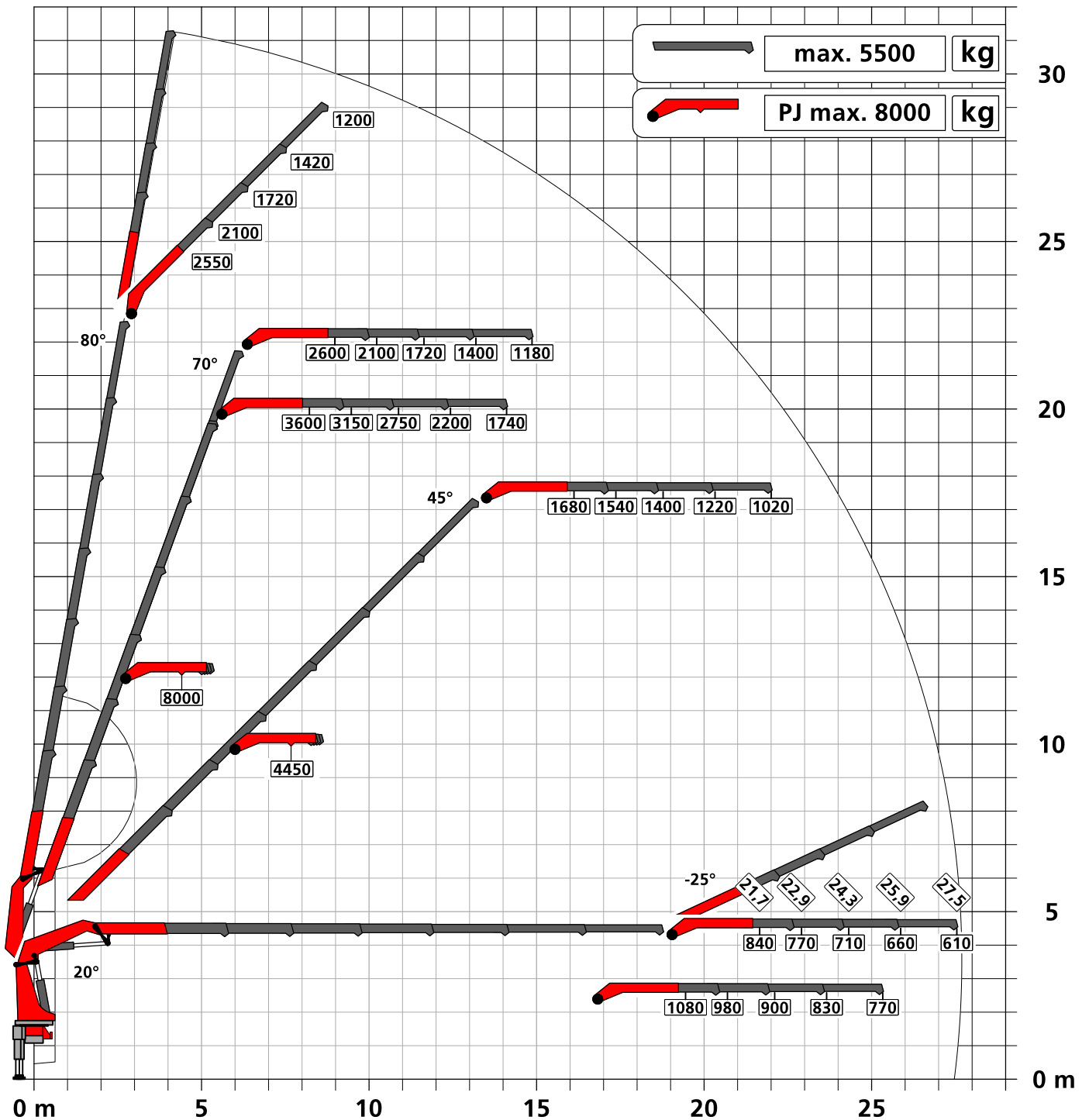
Page 020.21100 3.5t

Lifting capacity diagram PK 580 TEC F PJ150 C DPS-C

Subject to change, production tolerances have to be taken into account.

Symbolic crane figure

DPS-C
Dual Power System



The load capacities as per chart are not reached when using hose equipment on the Fly-Jib.



For Rope winch load capacity refer to page

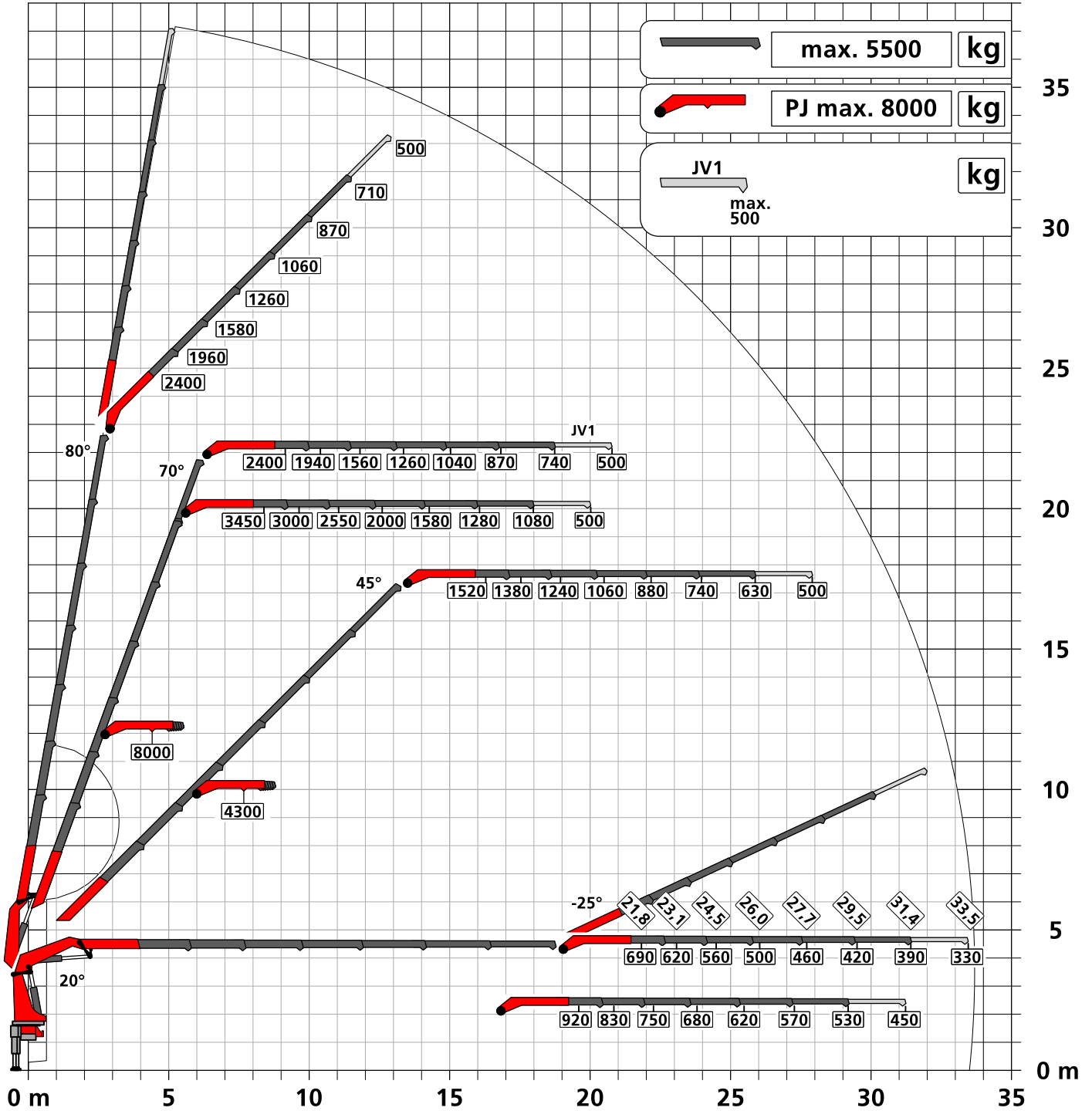
Page 020.21000 2.5t

Page 020.21100 3.5t

Subject to change, production tolerances have to be taken into account.

Symbolic crane figure

DPS-C
Dual Power System



:Dead weight JV1
40 kg

When using mechanical boom extensions, the loads shown on the charts need to be reduced by the weight of these extensions. The load capacities as per chart are not reached when using hose equipment on the Fly-Jib.



For Rope winch load capacity refer to page

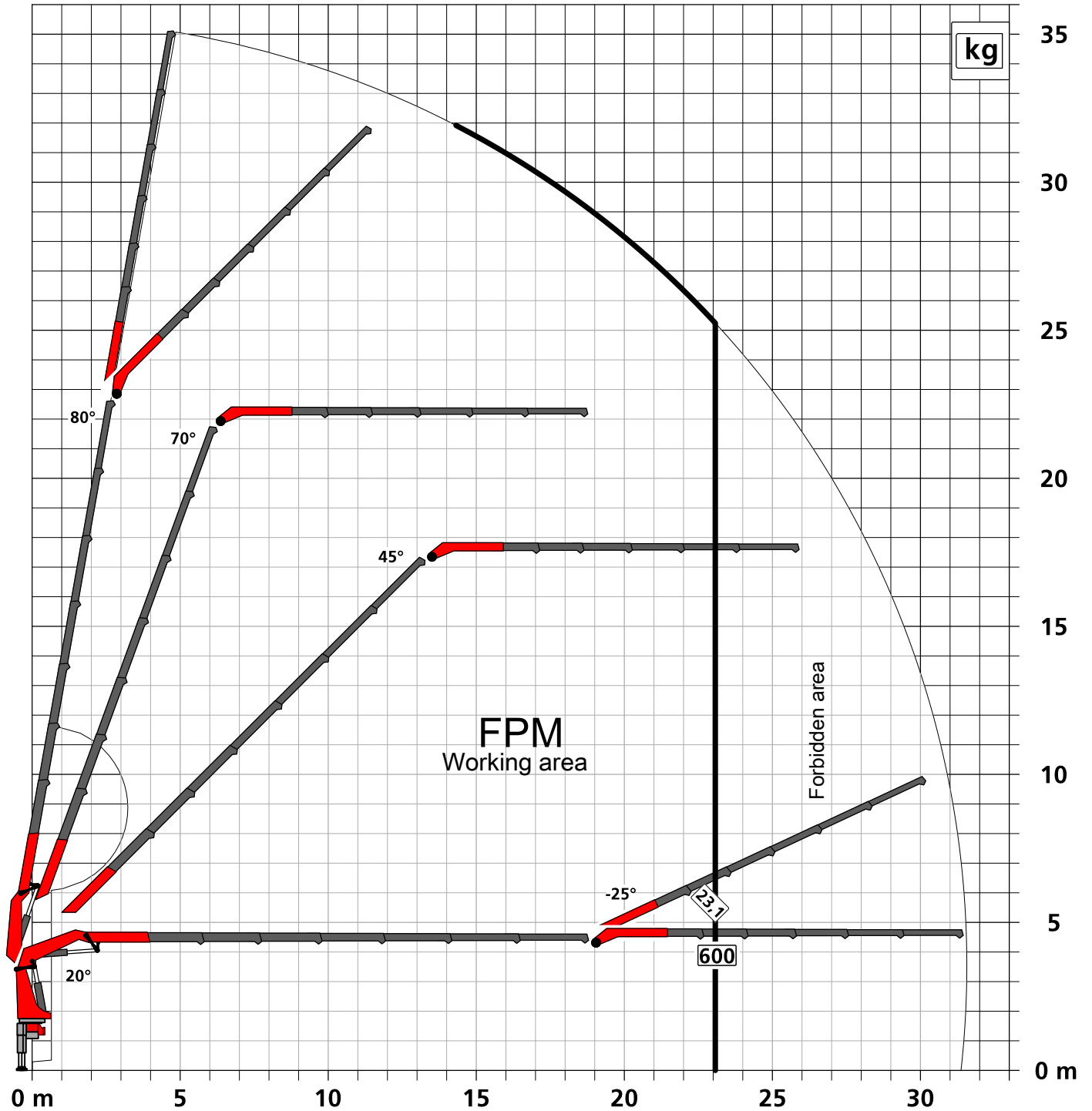
Page 020.21000 2.5t

Page 020.21100 3.5t

Subject to change, production tolerances have to be taken into account.

Symbolic crane figure

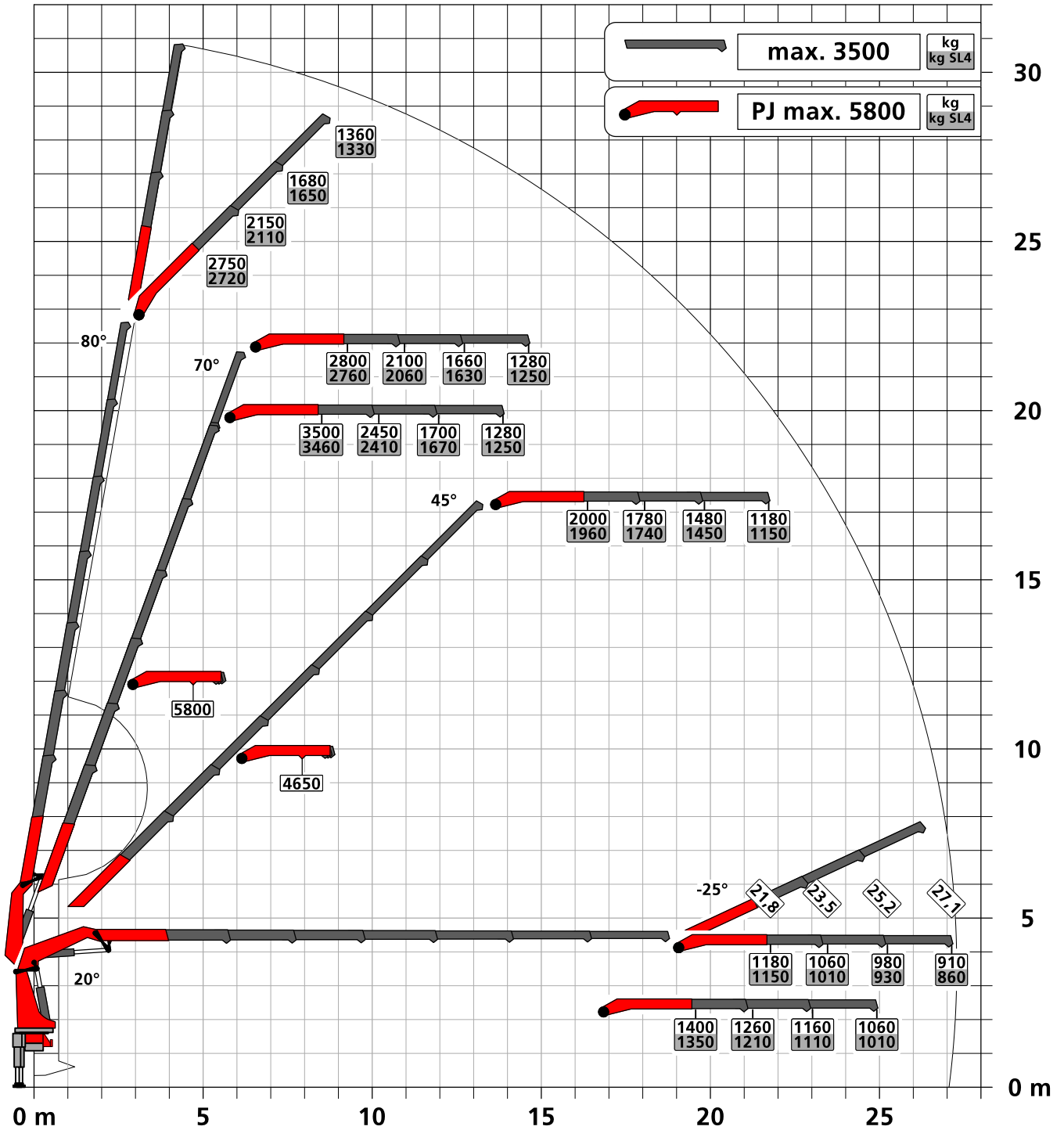
Personal fall protection mode FPM



Subject to change, production tolerances have to be taken into account.

Symbolic crane figure

DPS-C
Dual Power System



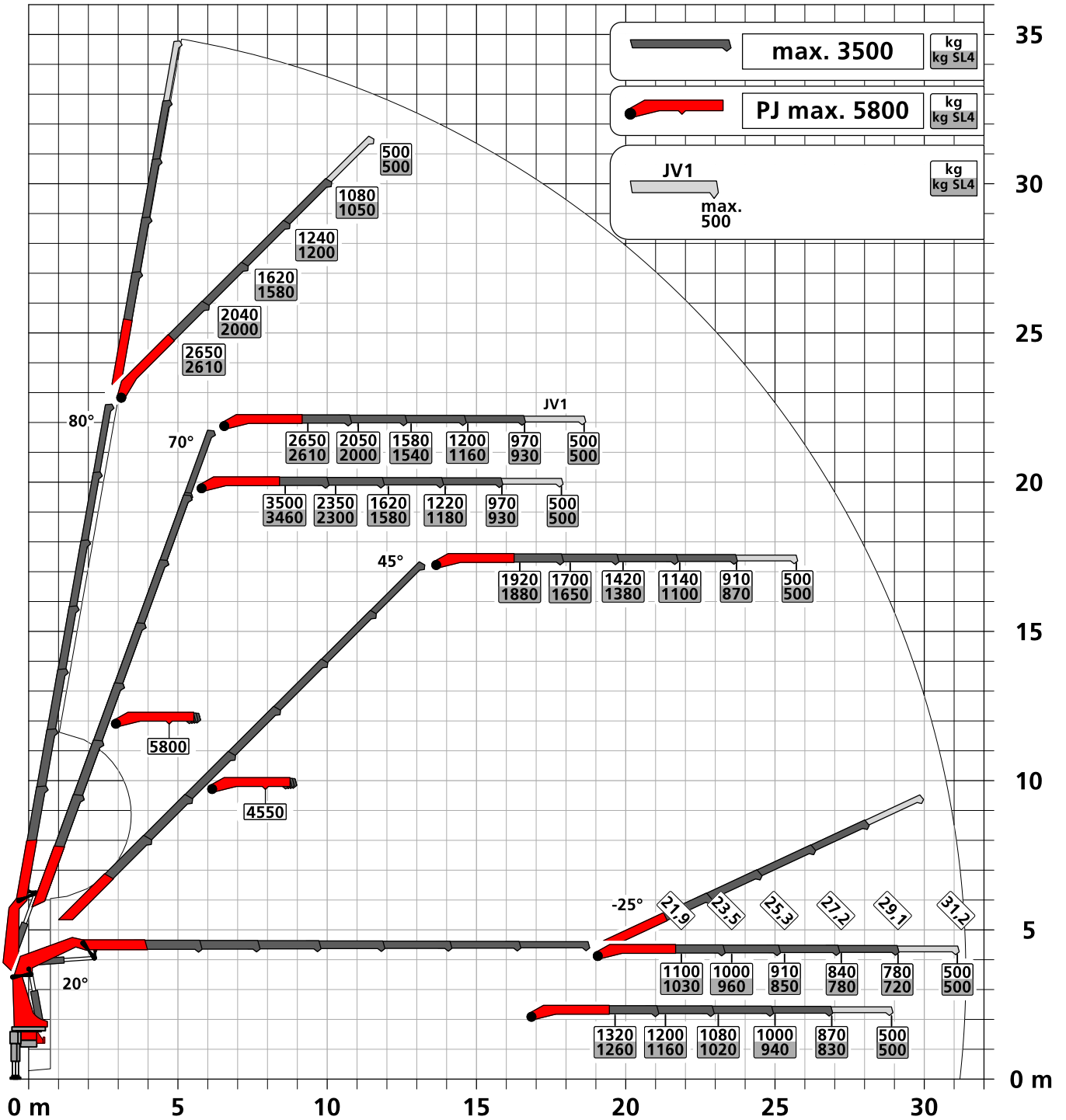
For Rope winch load capacity refer to page
Page 020.21000 2.5t

Lifting capacity diagram PK 580 TEC F PJ090 CJV1 DPS-C

Subject to change, production tolerances have to be taken into account.

Symbolic crane figure

DPS-C
Dual Power System



:Dead weight JV1
40 kg

When using mechanical boom extensions, the loads shown on the charts need to be reduced by the weight of these extensions.

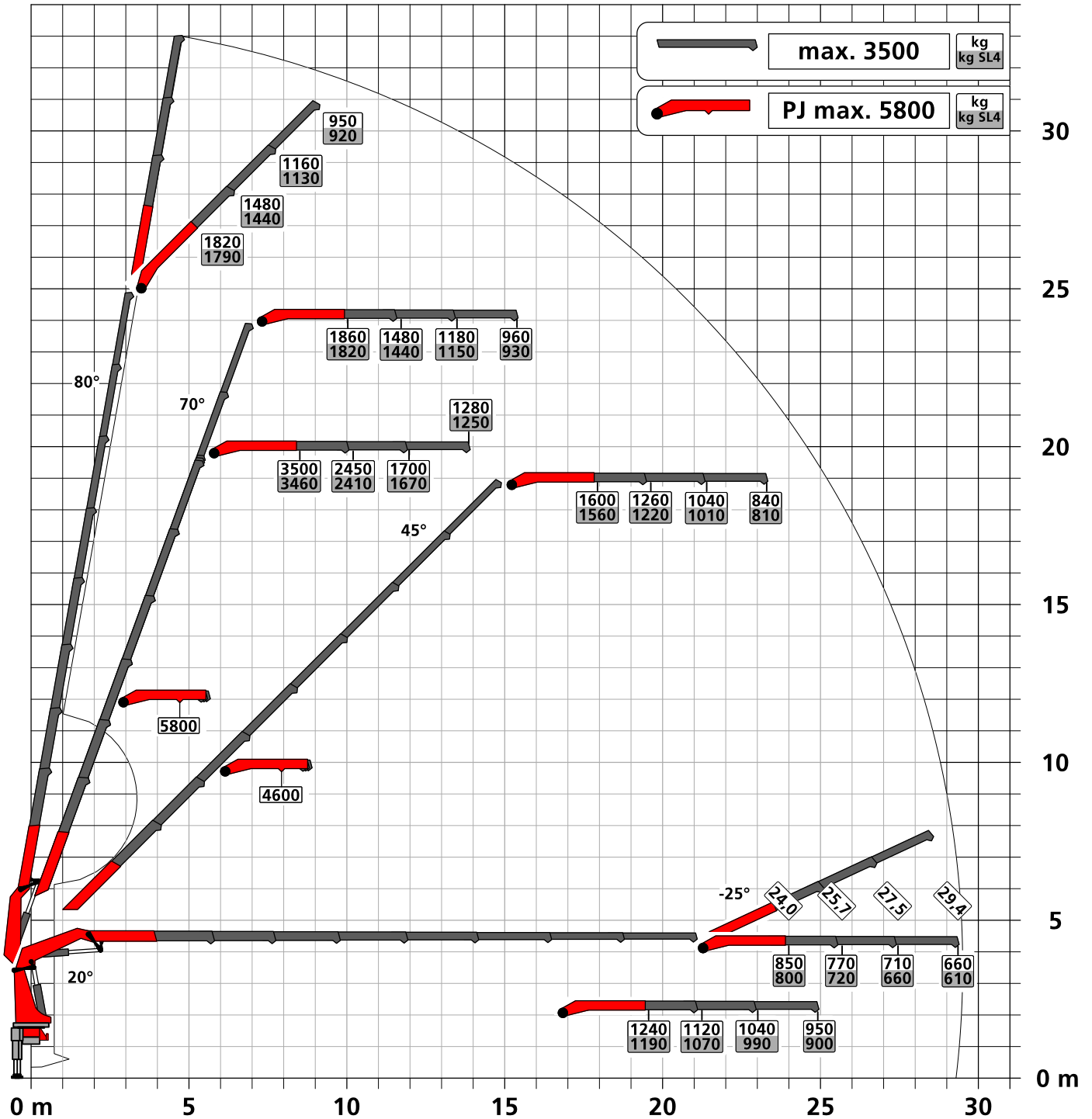


For Rope winch load capacity refer to page
Page 020.21000 2.5t

Subject to change, production tolerances have to be taken into account.

Symbolic crane figure

DPS-C
Dual Power System



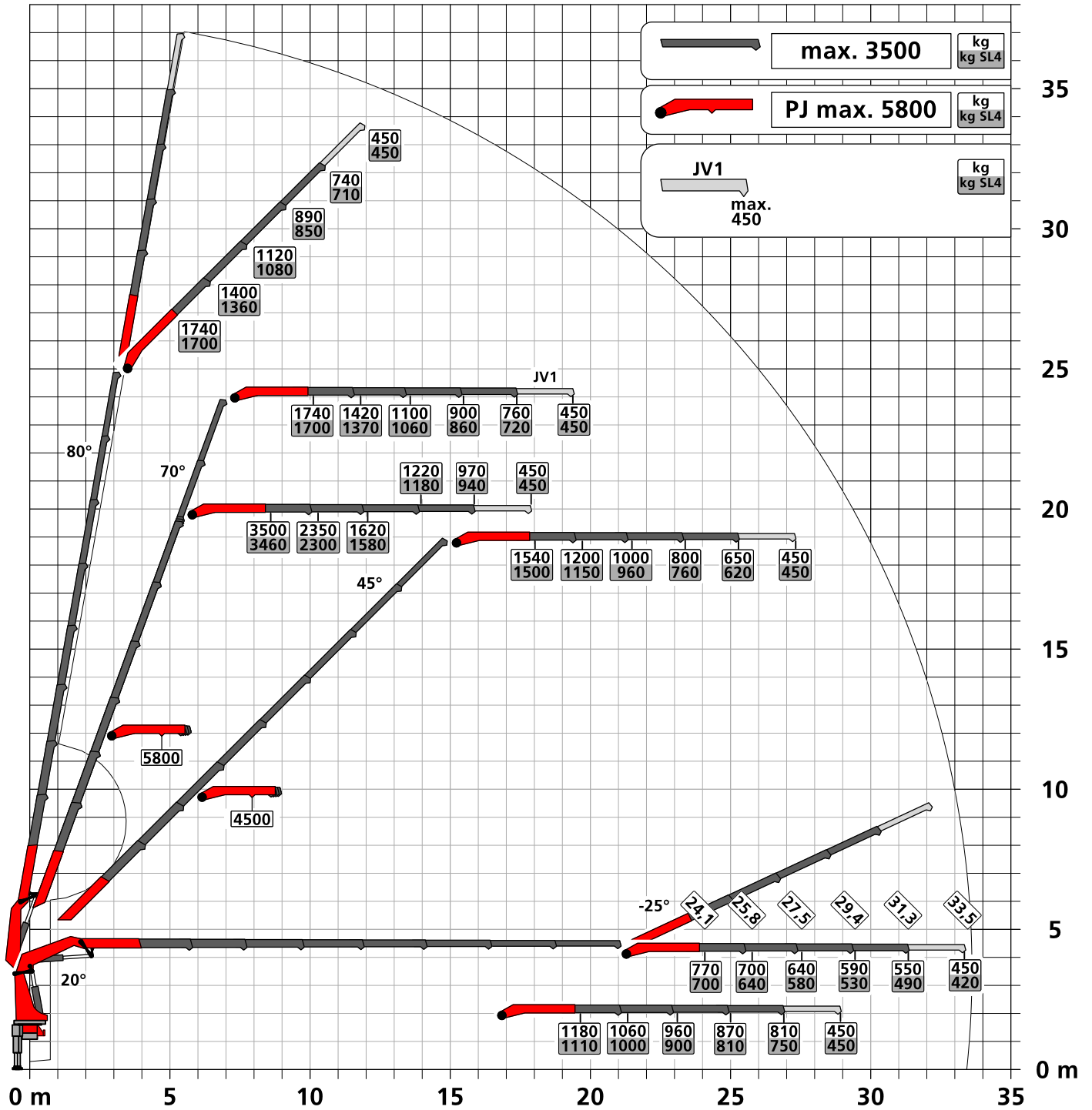
For Rope winch load capacity refer to page
Page 020.21000 2.5t

Lifting capacity diagram PK 580 TEC G PJ090 CJV1 DPS-C

Subject to change, production tolerances have to be taken into account.

Symbolic crane figure

DPS-C
Dual Power System



:Dead weight JV1
40 kg

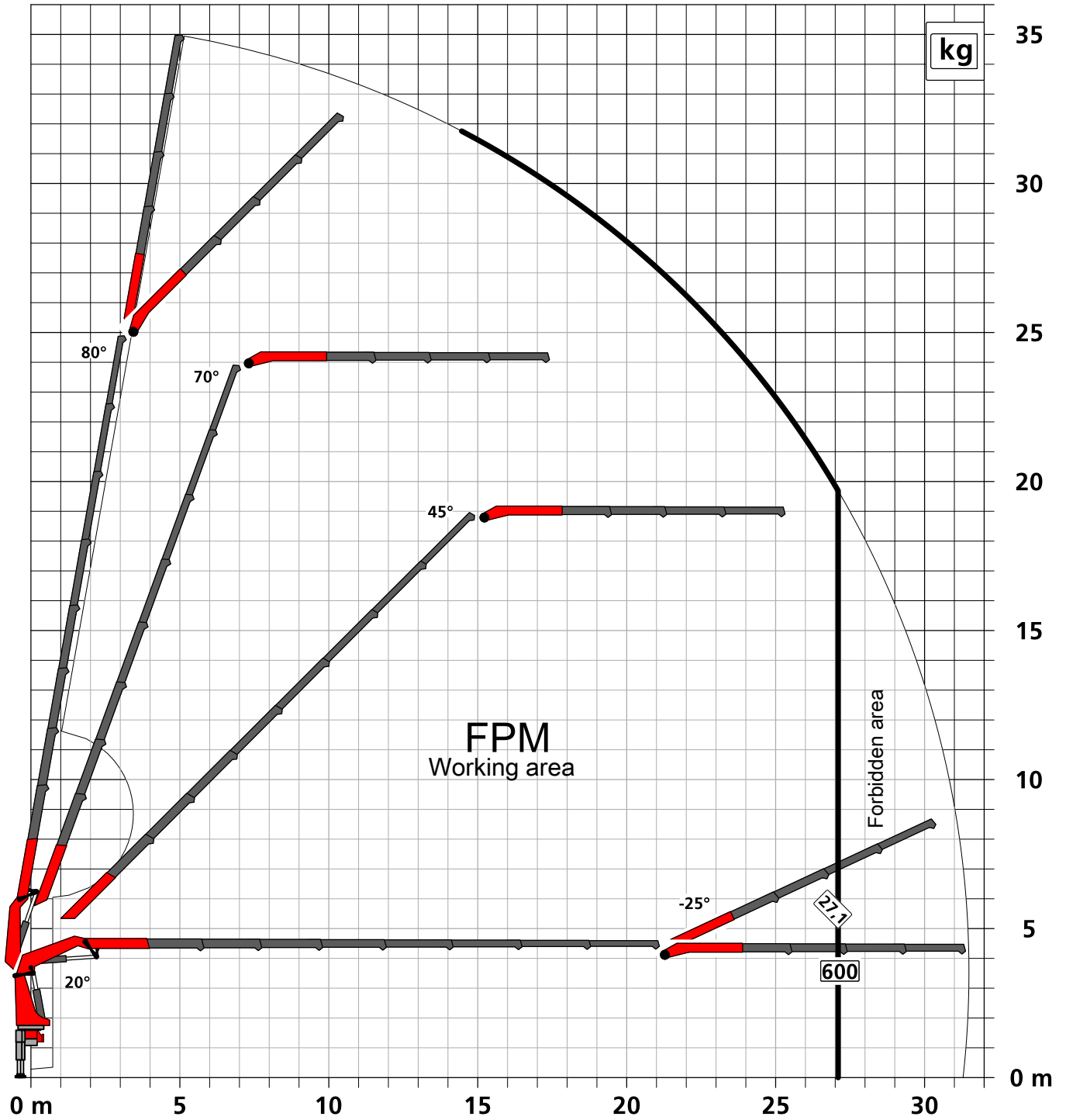
When using mechanical boom extensions, the loads shown on the charts need to be reduced by the weight of these extensions.

For Rope winch load capacity refer to page
Page 020.21000 2.5t

Subject to change, production tolerances have to be taken into account.

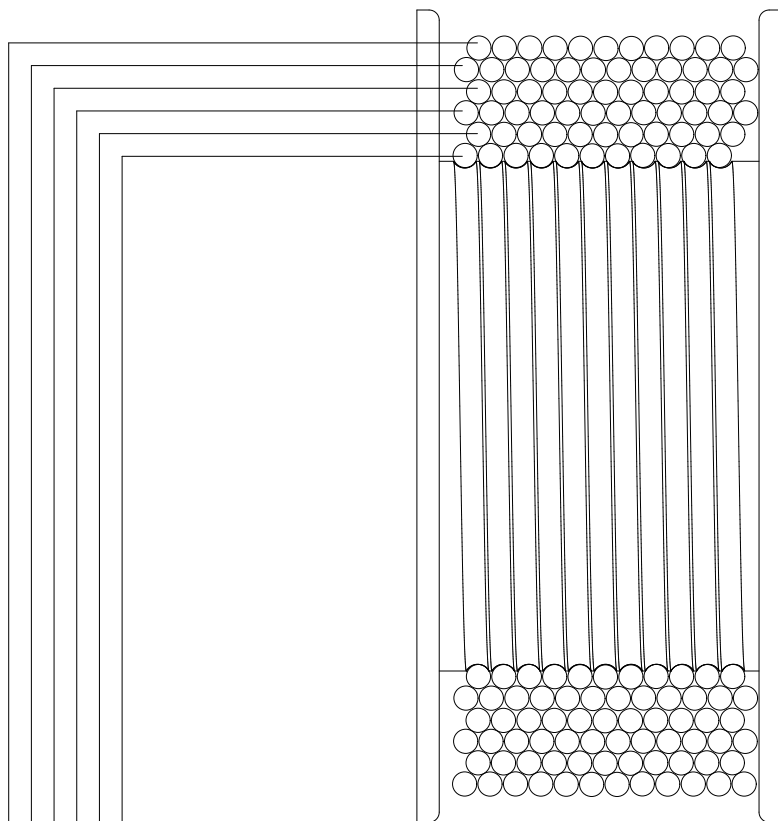
Symbolic crane figure


Personal fall protection mode FPM

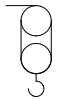


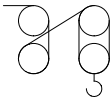
Load capacity-Rope winch 2.5t

Subject to change, production tolerances have to be taken into account.



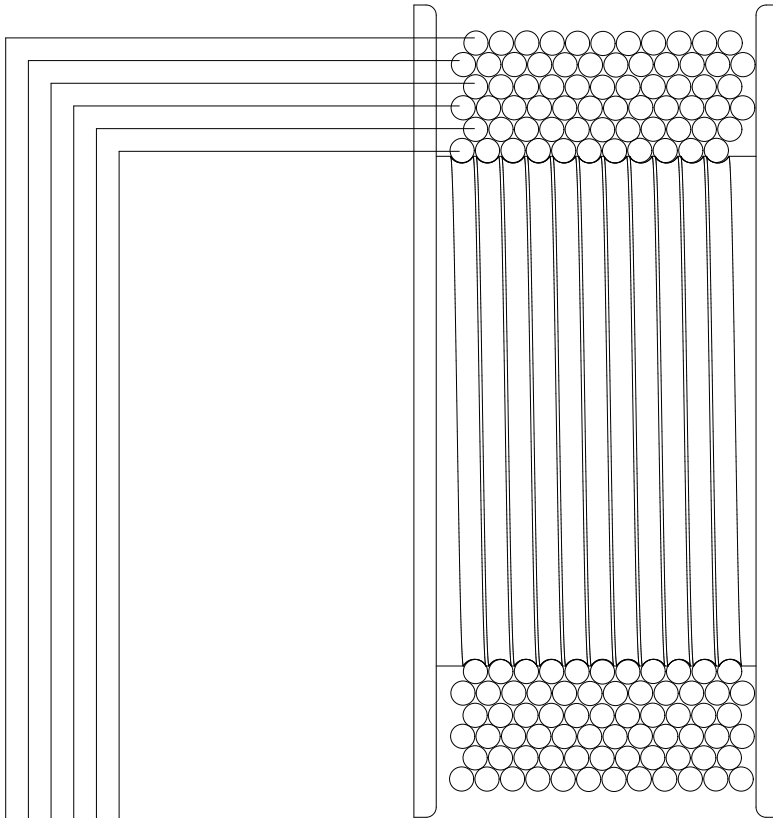
Strands	
1STRAN	
	
Load capacity	Wire reception
1 2500 kg [5,510 lb]	12 m [39' 4"]
2 2350 kg [5,180 lb]	24 m [78' 9"]
3 2210 kg [4,870 lb]	37,6 m [123' 4"]
4 2090 kg [4,610 lb]	51 m [167' 4"]
5 1980 kg [4,370 lb]	66,2 m [217' 2"]
6 1880 kg [4,150 lb]	81 m [265' 9"]


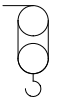
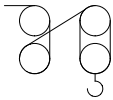
Strands	
2STRAN	
	
Load capacity	Wire reception
5000 kg [11,020 lb]	12 m [39' 4"]
4700 kg [10,360 lb]	24 m [78' 9"]
4420 kg [9,740 lb]	37,6 m [123' 4"]
4180 kg [9,220 lb]	51 m [167' 4"]
3970 kg [8,750 lb]	66,2 m [217' 2"]
3760 kg [8,290 lb]	81 m [265' 9"]

Strands	
4STRAN	
	
Load capacity	Wire reception
10000 kg [22,050 lb]	12 m [39' 4"]
9400 kg [20,720 lb]	24 m [78' 9"]
8840 kg [19,490 lb]	37,6 m [123' 4"]
8360 kg [18,430 lb]	51 m [167' 4"]
7920 kg [17,460 lb]	66,2 m [217' 2"]
7520 kg [16,580 lb]	81 m [265' 9"]

Weights of load handling devices are part of the load lifted and must be deducted from the capacity.
Weight of the load handling equipment must be deducted from the lifting capacity.

Subject to change, production tolerances have to be taken into account.



		Strands		Strands		Strands	
		1STRAN		2STRAN		4STRAN	
							
		Load capacity	Wire reception	Load capacity	Wire reception	Load capacity	Wire reception
1	3500 kg [7,720 lb]	13,1 m [43'0"]	7000 kg [15,430 lb]	13,1 m [43'0"]	14000 kg [30,860 lb]	13,1 m [43'0"]	
2	3260 kg [7,190 lb]	26,2 m [85'11"]	6520 kg [14,370 lb]	26,2 m [85'11"]	13040 kg [28,750 lb]	26,2 m [85'11"]	
3	3050 kg [6,720 lb]	41,2 m [135'2"]	6100 kg [13,450 lb]	41,2 m [135'2"]	12200 kg [26,900 lb]	41,2 m [135'2"]	
4	2870 kg [6,330 lb]	56,1 m [184'1"]	5740 kg [12,650 lb]	56,1 m [184'1"]	11480 kg [25,310 lb]	56,1 m [184'1"]	
5	2705 kg [5,960 lb]	73,1 m [239'10"]	5410 kg [11,930 lb]	73,1 m [239'10"]	10820 kg [23,850 lb]	73,1 m [239'10"]	
6	2560 kg [5,640 lb]	89,8 m [294'7"]	5120 kg [11,290 lb]	89,8 m [294'7"]	10240 kg [22,570 lb]	89,8 m [294'7"]	

Weights of load handling devices are part of the load lifted and must be deducted from the capacity.
Weight of the load handling equipment must be deducted from the lifting capacity.

